

REGIONAL REVIEW

Eastern WIA Highlights

Roswell grand opening, good news for Holloman, and new store in Portales

Roswell Area, Chaves County:

The **Candlewood Suites**, Roswell's newest hotel, formally opened in mid-July with a ribbon-cutting ceremony for about 100 guests. The four-story hotel has 87 suites. Five are one-bedroom suites with separate living quarters, fully-equipped kitchens, an executive desk, recliners and VCR/DVD players. The smaller suites have kitchenettes with microwaves, mini fridges and two-top stoves. All suites have granite countertops and a 32-inch flat-screen TV.

The hotel's general manager said the hotel was already fully staffed and credited the Workforce Development Center with helping to fill all

the positions so quickly.

Alamogordo Area, Otero County:

The commander of Air Combat Command announced the selection of **Holloman Air Force Base** in Alamogordo to be the new location for an additional MQ-1 Predator and MQ-9 Reaper formal training unit. Gen. John D.W. Corley, with concurrence from the chief of staff of the Air Force, announced that the additional formal training unit will allow the Air Force to increase the number of Predator and Reaper combat operators. The decision was made based on the completion of a favorable Environmental Impact Analysis required under the National Environmental Policy Act.

Other factors in the decision included the best combination of existing facilities, restricted airspace, cost effectiveness, mission compatibility and good weather.

Portales Area,

Roosevelt County:

A **Papa Murphy's** take-and-bake pizza store is coming soon to Portales. The White family, owners of the Clovis Papa Murphy's, plans to open their second eastern New Mexico store, probably in mid-August. The store will have a staff of 15-18 people initially.

Economic activity in the Eastern WIA is gathered from published articles, government documents, private and public sector news releases, and reports from local NMDWS Workforce Centers.



Employment Data To Be Released

THE QUARTERLY Census of Employment & Wages (QCEW) unit of the Economic Research & Analysis Bureau will be releasing 1st quarter data within the month. This unit produces a quarterly count of employment and wages by industry at the statewide, WIA region, MSA, and county levels.

The 1st quarter QCEW data will also include 2008 annual data. This employment data will be available under the "Publications" tab at:

www.dws.state.nm.us/dws-lmi.html

Data at the WIA-level will also be available in New Mexico's powerful, user-friendly online labor market information system, **LASER**, at:

<http://laser.state.nm.us>

QUICK FACTS

NATIONAL	NEW MEXICO	EASTERN WIA
UNEMPLOYMENT RATE ¹9.7%	UNEMPLOYMENT RATE7.5%	UNEMPLOYMENT RATE6.3%
INITIAL UI CLAIMS ²40.4%	INITIAL UI CLAIMS ³43.4%	INITIAL UI CLAIMS88.2%
CONTINUED UI CLAIMS94.0%	CONTINUED UI CLAIMS124.3%	CONTINUED UI CLAIMS201.5%

¹ Figures are not seasonally adjusted.

² Unemployment claims data is over-the-year percentage change.

³ State and WIA counts represent regular UI claims without earnings for the week that included the twelfth of the month and exclude claims without a valid industry code.

National data source: U.S. Department of Labor, Employment & Training Administration

State and WIA data source: New Mexico Department of Workforce Solutions, Economic Research & Analysis Bureau, Program to Measure Insured Unemployed Statistics (PROMIS) database.

Unemployment

THE UNEMPLOYMENT rate, not seasonally adjusted, for the Eastern WIA region was 6.3 percent, up from 6.1 percent in June. The highest unemployment rate in the Eastern WIA region was Lea County (8.0 percent), and the lowest rate was in Curry County (4.5 percent).

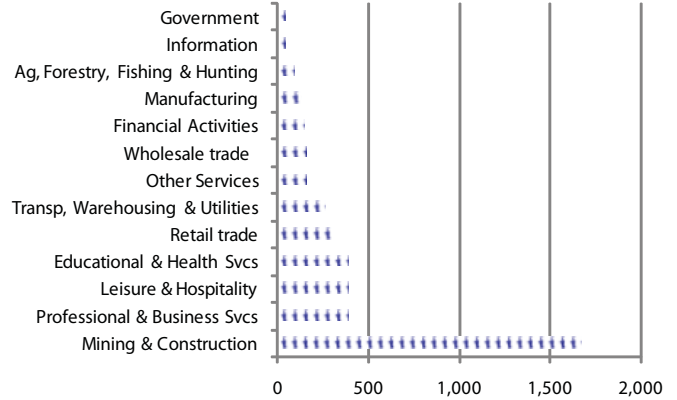
The total number of initial claims for the WIA region was 1,302, an 88 percent increase from the total number in July 2008. Continued claims have nearly tripled since last year,

rising to 4,350 from 1,443 last July.

Continued claim counts were highest in the mining & construction grouping, with over 1,400 more claims than last July. Claims in the professional & business services, leisure & hospitality, educational & health services, and retail trade industries constituted over 30 percent of total continued claims this month.

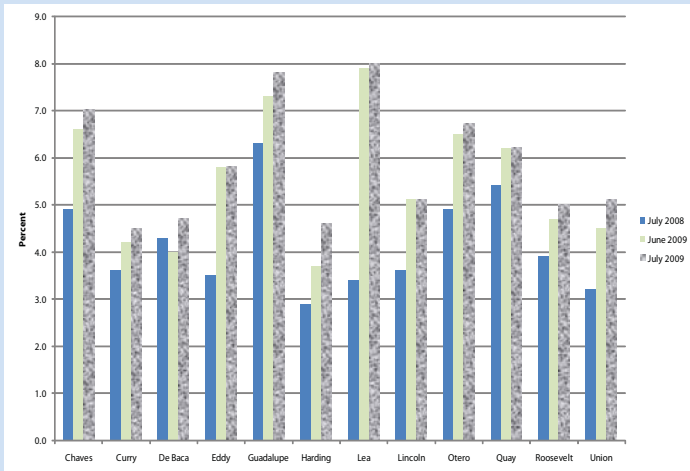
CONTINUED CLAIMANTS BY SELECTED INDUSTRIES

July 2009



Note: Counts represent regular UI claims without earnings for the week that included the twelfth of the month and exclude claims without a valid industry code.
Source: New Mexico Department of Workforce Solutions, Economic Research & Analysis Bureau, Program to Measure Insured Unemployed Statistics (PROMIS) database.

UNEMPLOYMENT RATE BY COUNTY



Note: Figures not seasonally adjusted.
Source: New Mexico Department of Workforce Solutions, Economic Research & Analysis Bureau, LAUS Unit in conjunction with the U.S. Bureau of Labor Statistics.

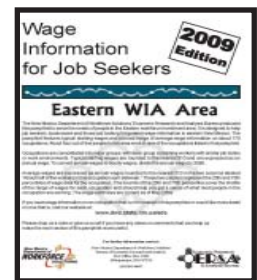
Quick Reference Wage Information Sheets

WAGE INFO sheets are now available online for the Eastern WIA region. NMDWS ER&A Bureau produces these pamphlets to serve the needs of the people in the WIA region and to help job seekers, businesses, and those looking for general wage information in eastern New Mexico.

and the wage range that about half the workers in that occupation earn.

The wage sheets are available online under the "Wages" tab at:

www.dws.state.nm.us/dws-lmi.html



The wage data is presented by major occupational group from ranging from computer occupations to construction & extraction occupations. The data includes starting wages

WIA LABOR FORCE

Civilian Labor Force
.....168,279

Employment
.....157,653

Unemployment
.....10,626

Unemployment Rate
.....6.3%



OCCUPATIONAL SHORTAGES & SURPLUSES

Shortages		Surpluses	
Internists		Administrative Services Managers	Receptionists & Information Clerks
Pipe Fitters & Steamfitters		Bookkeeping, Accounting & Auditing Clerks	Retail Salespersons
Police Patrol Officers		Cashiers	Truck Drivers, Heavy & Tractor-Trailer
Registered Nurses		Construction Laborers	
		Customer Service Representatives	
		Helpers—Production Workers	
		Labor & Freight, Stock & Mat Movers	
		Maintenance & Repair Workers	
		Managers	
		Office Clerks	
Statewide Occupational Rollover Statistics			
Cashiers	Helpers—Production Workers	Nursing Aides, Orderlies & Attendants	Sales Representatives
Computer Support Specialists	Janitors & Cleaners	Office Clerks	Security Guards
Customer Service Representatives	Laborers & Freight, Stock & Material Movers	Personal & Home Care Aides	Truck Drivers, Heavy & Tractor-Trailer
Electricians	Maids & Housekeeping Cleaners	Retail Salespersons	

Notes: Based on posted job orders & resumes entered in the NM Workforce Connection System by occupation in the last 30 days (August 24, 2009). Occupational Rollover Statistics is an indicator of occupational activity with both numerous job orders and resumes in NM Workforce Connection.
Source: New Mexico Department of Workforce Solutions, Economic Research & Analysis Bureau.