

Southwestern WIA REGIONAL REVIEW



NMDWS-ER&A
Vol. 01 No. 02
October 9, 2009

Southwestern WIA Highlights

Grand openings in Las Cruces and closing in Silver City

Las Cruces Area, Doña Ana County:
Dickey's Barbecue Pit has opened its first Las Cruces area restaurant. Located at 1660 South Valley Drive, near Wal-Mart, the eatery takes over the space that formerly housed the American BBQ Factory. The restaurant offers takeout, delivery, and catering services and has about 20 employees.

First American Bank has opened a new, 14,000-square foot facility in Las Cruces on Idaho Avenue, near the corner of Idaho and Med Park Drive. While not a bank branch, the location—which employs 35—does have a

drive-up ATM and houses the company's mortgage department. In January, the company, founded in Artesia, changed its name to First American Bank from First National Bank, switched from a nationally chartered institution to become a state-chartered bank, and opened the first bank in Chaparral.

Silver City Area, Grant County:
Star Mountain Trading, a jewelry and jewelry and craft supplies store, is closing after 14 years of operation. The store's owners note a loss of downtown foot traffic and higher utilities, taxes, and

insurance on the 5,250-square-foot building as the primary reasons for the closure of the Bullard Street business.

Economic activity in the Southwestern WIA is gathered from published articles, government documents, private and public sector news releases, and reports from local NMDWS Workforce Centers.

If you would like to provide information about any business openings, closings, or economic activity in the Southwestern WIA, please contact NMDWS Economic Research & Analysis Bureau at:

(505) 841-8645



New Data Released

THE QUARTERLY Census of Employment & Wages (QCEW) unit of the Economic Research & Analysis Bureau has released first quarter data this month. This unit produces a quarterly count of employment and wages by industry at the state-wide, WIA region, MSA, and county levels.

The total number of employees located in the Southwestern WIA in first quarter was 93,960. The largest major industry sector was health care & social assistance followed by retail trade.

The first quarter QCEW data includes 2008 annual data. This employment data is available under the "Publications" tab at: www.dws.state.nm.us/dws-lmi.html

Data at the WIA-level is also be available in New Mexico's online labor market information system, *LASER*, at:

<http://laser.state.nm.us>

QUICK FACTS

NATIONAL	NEW MEXICO	SOUTHWESTERN WIA
UNEMPLOYMENT RATE ¹9.6%	UNEMPLOYMENT RATE7.6%	UNEMPLOYMENT RATE8.1%
INITIAL UI CLAIMS ²28.7%	INITIAL UI CLAIMS ³44.1%	INITIAL UI CLAIMS50.5%
CONTINUED UI CLAIMS81.3%	CONTINUED UI CLAIMS116.4%	CONTINUED UI CLAIMS123.2%

¹ Figures are not seasonally adjusted.

² Unemployment claims data is over-the-year percentage change.

³ State and WIA counts represent regular UI claims without earnings for the week that included the twelfth of the month.

National data source: U.S. Department of Labor, Employment & Training Administration

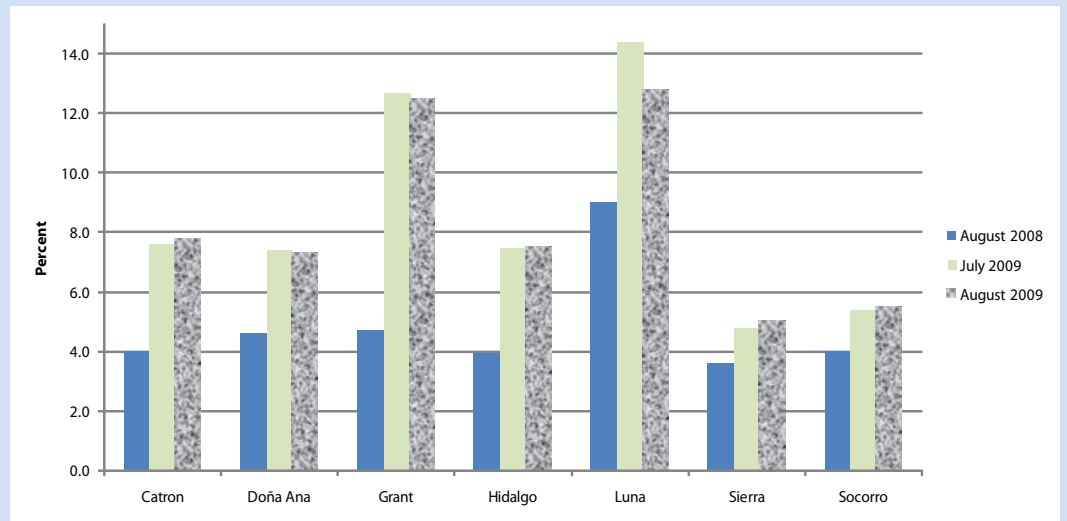
State and WIA data source: New Mexico Department of Workforce Solutions, Economic Research & Analysis Bureau, Program to Measure Insured Unemployed Statistics (PROMIS) database.

Unemployment

THE UNEMPLOYMENT rate, not seasonally adjusted, for the Southwestern WIA region was 8.1 percent, down from 8.3 percent in July. The highest unemployment rate in the Southwestern WIA region was Luna County (12.8 percent), and the lowest rate was in Sierra County (5.0 percent).

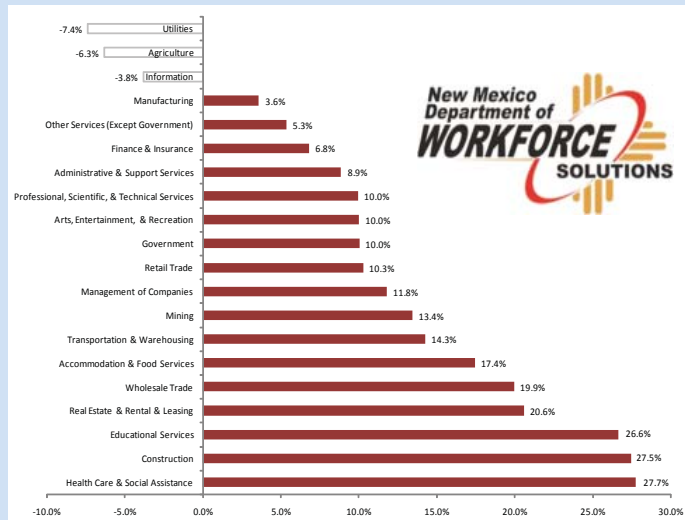
The total number of initial claims for the WIA region was 971, a 51 percent increase from the total number in August 2008. Continued claims were up 123 percent over the year.

UNEMPLOYMENT RATE BY COUNTY



Note: Figures not seasonally adjusted.
Source: New Mexico Department of Workforce Solutions, Economic Research & Analysis Bureau, LAUS Unit in conjunction with the U.S. Bureau of Labor Statistics.

SOUTHWESTERN WIA PROJECTED INDUSTRY PERCENT CHANGE 2008-2018



Source: New Mexico Department of Workforce Solutions, Economic Research & Analysis Bureau, 2008-2018 Projections.

2008-2018 Employment Projections "In Brief"

THE 2018 Southwestern WIA Employment Projections In Brief presents a summary of information about the region's job market and economy for ten years from 2008 to 2018. Additional information can be found in the 2018 In Brief, the Employment Projections 2018 for the other WIA regions and MSAs, and on our website at: www.dws.state.nm.us/dws-lmi.html

The Southwestern WIA economy is expected to generate about 16,150 new jobs through

the year 2018. This represents growth of about 15.3 percent.

The education sector leads the growth by adding over 4,200 alone, followed by healthcare & social assistance projected to add over 3,700 jobs. Occupations with the highest annual openings make up a diverse group. Examples include retail salespersons, personal care aides, registered nurses, general & operations managers, administrative support workers, and teachers.

WIA LABOR FORCE

Civilian Labor Force

.....137,191

Employment

.....126,048

Unemployment

.....11,143

Unemployment Rate

.....8.1%

OCCUPATIONAL SHORTAGES & SURPLUSES

Shortages	Surpluses
Computer Software Engineers	Cashiers
Lic Practical & Lic Vocational Nurses	Child Care Wrks
Nonfarm Animal Caretakers	Construction Carpenters
Registered Nurses	Construction Laborers
Rough Carpenters	Construction Managers
Sales & Related Wrks	Customer Service Representatives
Welders, Cutters & Welder Fitters	Nursing Aides, Orderlies & Attend
	Office Clerks
	Oper Eng & Other Const Equip Op
	Personal & Home Care Aides
	Receptionists & Information Clerks
	Retail Salespersons
	Secretaries, Except Legal, Med & Exec
	Truck Drivers, Heavy & Tractor-Trailer
Statewide Occupational Rollover Statistics	
Cashiers	Sales Representatives, Services
Customer Service Representatives	
Nursing Aides, Orderlies & Attendants	
Retail Salespersons	

Notes: Based on posted job orders & resumes entered in the NM Workforce Connection System by occupation in the last 30 days (September 18, 2009). Occupational Rollover Statistics is an indicator of occupational activity with both numerous job orders and resumes in NM Workforce Connection.

Source: New Mexico Department of Workforce Solutions, Economic Research & Analysis Bureau.